

Cole Natalie

From: Barrett Daliah
Sent: 02 February 2011 11:48
To: Cole Natalie
Subject: FW: Kassaba Evidence

Attachments: Letter to Residents.doc; ltr to licensing with plan.doc; Drinks list December 2010.xls; Kassaba Plans.pdf

Nat

This is additional documents from the applicants to go with the other docs she had sent in previously.

Thanks

From: Helen Cardy [mailto:H.Cardy@popall.co.uk] **On Behalf Of** Clare Eames
Sent: 31 January 2011 17:17
To: Barrett Daliah
Subject: Kassaba Evidence

Dear Daliah

Please find attached copy letter and enclosures also to be sent out in tonight's post.

This completes our bundle of evidence. Please insert the letter to residents at tab 2 and the drinks menu at tab 4.

I will bring hard copies of each of these documents with me to tomorrow's hearing.

Kind regards

Clare Eames, Partner
Popleston Allen
88 Kingsway, London, WC2B 6AA
T: 0207 936 5874 M: 07866 436464 W: www.popall.co.uk

Nottingham Office : 37 Stoney Street, The Lace Market, Nottingham, NG1 1LS T : 0115 953 8500 F : 0115 953 8501

Regulated by the Solicitors Regulation Authority (SRA No: 78244). The professional rules to which we are subject are the Solicitors Code of Conduct. These rules can be viewed at www.sra.org.uk.

This email and the attachments are intended for the above named persons only and may be confidential and privileged. If you receive it in error please tell the sender immediately and do not copy, show or distribute them to anyone. Although we have taken steps to ensure that this email and its attachments are free from any viruses, it is your responsibility to ensure that viruses do not adversely affect your system.

This email has been scanned by the MessageLabs Email Security System.
For more information please visit <http://www.messagelabs.com/email>

Kassaba Restaurant, Bar and Lounge

1 New River Avenue

Hornsey

N8 7QD

Tel: 0208 340 0400

infor@kassaba.co.uk

27th January 2011

Dear Neighbours and Friends,

We hope the New Year has welcomed you warmly. Kassaba has now had it's doors open for 3 great months. Since taking over the Pumphouse site we hope we have made it bigger, better and brighter.

It's been our aim to serve the local community the most we can by providing the best dining and lounge experience possible. This includes being accessible and open to our neighbours and friends in New River Village, Tottenham Lane and Hornsey High Road. With that in mind we have had the opportunity to meet and talk with local residents to hear their thoughts on Kassaba, thank them for their compliments, take note of their suggestions and listen very carefully to any complaints.

As Kassaba has changed the face of the New River Village residential complex, we take our role as community members very seriously. We will not leave any stone unturned when exploring how we can harmonise an enjoyable, vibrant, and pleasing evening out at our establishment with the community residents. We want both our guests and neighbours happy. Since these chats with our neighbours and friends, we completely understand how improving on the Pumphouse site, such as being open later and changing the experience of the establishment, is joined to other considerations and responsibilities. We'd like to keep you updated as to what we're doing to make Kassaba a community friendly, considerate and approachable environment:

Limiter – Friday and Saturday nights are a lot of fun at Kassaba, but we also know that not everyone wants to be part of the excitement on those quiet nights in. A robust limiter has been calibrated and put in place so that when a particular song gets too loud, the noise cuts out until the track returns to acceptable levels.

Bass box relocation – We are constantly finding ways to refine the Kassaba impact and experience. Part of what we heard from neighbours was that they are sometimes conscious of the bass levels being prominent on nights that popular music is played. We have now had workmen detach and migrate our bass speakers across our main dome area so they are now centrally located in the heart of the room, away from any external walls.

Lobby area – Construction is underway creating an outside lobby area to our side door. This area is popular with smokers and those who wish to enjoy a beverage or Shisha pipe outside. This will again reduce noise and provide a new level of comfort for patrons and local residents.

Double front door – With a planning permission application already lodged with the council, we are aiming to incorporate large double doors into the front of the building, creating an atrium in front of our inner main door. This will again reduce noise leaks from doors opening and closing whilst any music is playing.

Insulated windows – In a bid to get our windows as sound resistant as our walls, we have had a coating applied to our upstairs windows that bears most of the brunt made by our speaker system.

Please know that Kassaba management are completely available to anyone wishing to voice concern or participate in constructive conversations for any issue that they feel Kassaba can do something about. We aim to provide a higher standard of restaurant, bar and lounge experience to customers and feel that of all the people we can serve, our neighbours and friends are amongst the most important.

Please do not hesitate to contact any of Kassaba management below should you need anything, we are happy to meet or talk on the phone at anytime.

Kind regards,

Asad Riaz
[07958 439590](tel:07958439590)

Ifti Khan
[07912 899377](tel:07912899377)

Omar Riaz
[07734 858536](tel:07734858536)

Daliah Barrett
Licensing
London Borough of Haringey
Environment, Techno Park
Ashley Road, Tottenham
London
N17 9LN

31 January 2011

CE/HEC/P36280-7
Doc Ref: 2143832807

c.eames@popall.co.uk

0207 936 5875

Sent via post and email

Dear Daliah

Kassaba, 1 New River Avenue, Hornsey, , London
Variation of Premises Licence

I write further to your email of the 18th January which I attach for ease of reference and attach PDF copies of the revised plans showing the new lobby to the side door. I will ensure that I bring hard copies to the hearing on Tuesday night.

Yours sincerely

Clare Eames
Poppleston Allen



Champagne and Sparkling Wine	125ml Gls		75cl Btl	1.5L Btl
Prosecco, Sant Orsola	£4.50		£20.00	
Duval-Leroy Brut	£6.50		£34.00	£70.00
Moët & Chandon Brut Impérial, NV			£55.00	
Dom Pérignon Brut, 2000			£180.00	£550.00
Louis Roederer Cristal, 2002			£350.00	
Armand de Brignac 'Ace of Spades' Brut, NV			£375.00	
Moët & Chandon Rosé Impérial, NV			£75.00	
Laurent-Perrier Cuvée Rosé Brut			£100.00	£195.00
White Wine	125ml Gls	175ml Gls	250ml Gls	75cl Btl
Solstice Chardonnay Sicilia	£3.00	£4.00	£5.00	£14.95
Pinot Grigio del Veneto, Collezione Marchesini	£3.50	£4.50	£6.00	£16.50
Vidal Sauvignon Blanc, Marlborough				£24.95
Kleine Zalze Bush Vines Chenin Blanc, Stellenbosch				£15.99
Chateau Musar White Gaston Hochar, Bekaa Valley				£45.00
Meursault, Louis Jadot				£75.00
Rose Wine	125ml Gls	175ml Gls	250ml Gls	75cl Btl
Pinot Grigio Rosato del Veneto, Collezione Marchesini	£3.25	£4.00	£5.50	£15.95
Red Wine	125ml Gls	175ml Gls	250ml Gls	75cl Btl
Cabernet delle Venezie, San Floriano	£3.00	£4.00	£5.00	£14.95
Faustino VII Rioja Tinto				£21.95
Valpolicella Classico, Bolla				£25.00
Outback Chase Shiraz-Cabernet, South-Eastern Australia	£3.00	£4.00	£5.00	£14.95
Pinot Noir Provincia di Pavia Terre D'Alteni, La Versa				£19.95
Château Lyonnat, Lussac Saint-Émilion				£37.50
Solstice Shiraz Sicilia				£14.95
Châteauneuf-du-Pape Le Prince du Logis, Pierre de Laville				£45.00
Chateau Musar Red Gaston Hochar, Bekaa Valley				£55.00
Amarone della Valpolicella Classico, Bolla				£69.95

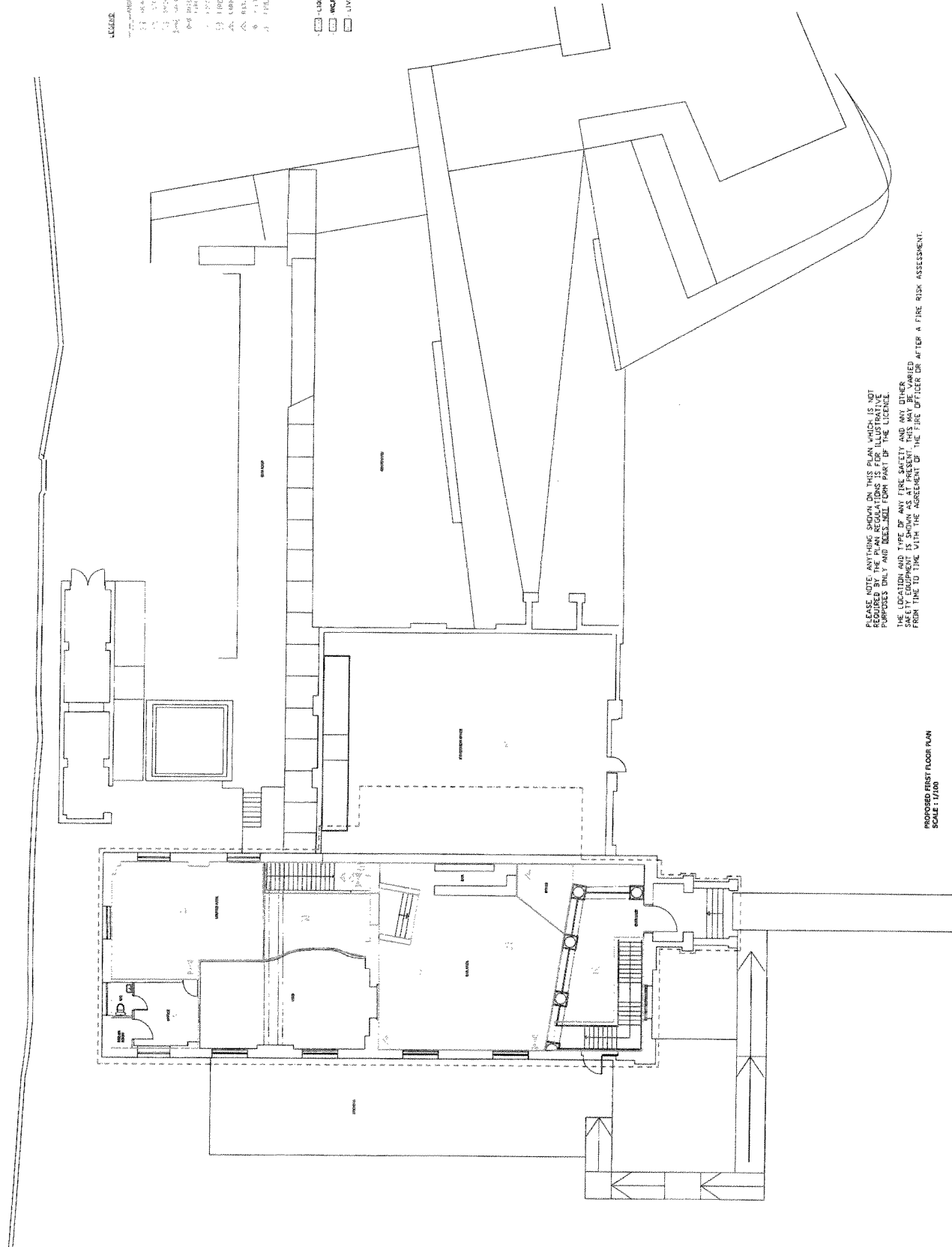


Cocktails

Flirtini Absolut Raspberry Vodka Cointreau, fresh raspberries, pineapple juice, sugar syrup, topped with Champagne	£9.95
Tiramisu Martini Absolut Vanila Vodka, vanila schnapps, cocoa liquor, kahlua coffee, coffee cream and sugar syrup	£9.95
Black Forest Martini Vodka, butterscotch schnapps, cherry brandy, chambord, fresh blackberries and cream float	£9.95
Fruit Bellini (strawberry, raspberry or peach) Fruit and liquor of your choice topped with Prosecco	£9.95
Fab Absolut Absolut raspberry vodka, cranberry juice, topped with champagne	£9.95
Daquiri (strawberry, raspberry, peach or mango) Rum, fresh lime juice, sugar syrup and fruit of your choice	£9.95
Mojito Rum, fresh lime vedges, mint leaves, sugar syrup	£8.95
Spiced Vanilla Mojito Sailor Jerry Rum, fresh lime vedges, mint leaves, vanila infused sugar syrup	£8.95
French Martini Vodka, pineapple, chambord, sugar syrup	£8.95
Margarita (classic, strawberry, raspberry, peach or mango) Tequilla, Cointreau, fresh lime juice, sugar syrup and fruits of your choice	£8.95
Caipirinha (classic, strawberry, raspberry, peach or mango) Cacacha, fresh lime, sugar syrup and fresh fruits of your choice	£8.95
Inquisition Absolut Raspberry Vodka, Peach Schnapps, pineapple juice & lemonde	£6.95
Sea Breeze Vodka, cranberry, grapefruit juice, fresh lime & sugar syrup	£6.95
Sex on the Beach Vodka, Peach Schnaps, orange & cranberry juice	£6.95
Cosmopolitan Citron Vodka, Cointreau, cranberry juice & fresh lime juice	£6.95
Long Island Iced Tea Vodka, Gin, Rum, Tequilla, Cointreau, sugar syrup, fresh lime juice and coke	£6.95
AA Vodka, Gin, Rum, Tequilla, Cointreau, sugar syrup, fresh lime juice and lemonde	£6.95
Sour (Midori, Amaretto or Whiskey) Your choice of spirit, fresh lime juice, egg yolk & sugar syrup	£6.95
All cocktails include a 50ml alcohol measure	
Dessert wine	37.5cl Btl
Concha y Toro Late Harvest Sauvignon Blanc, Maule Valley	£18.00

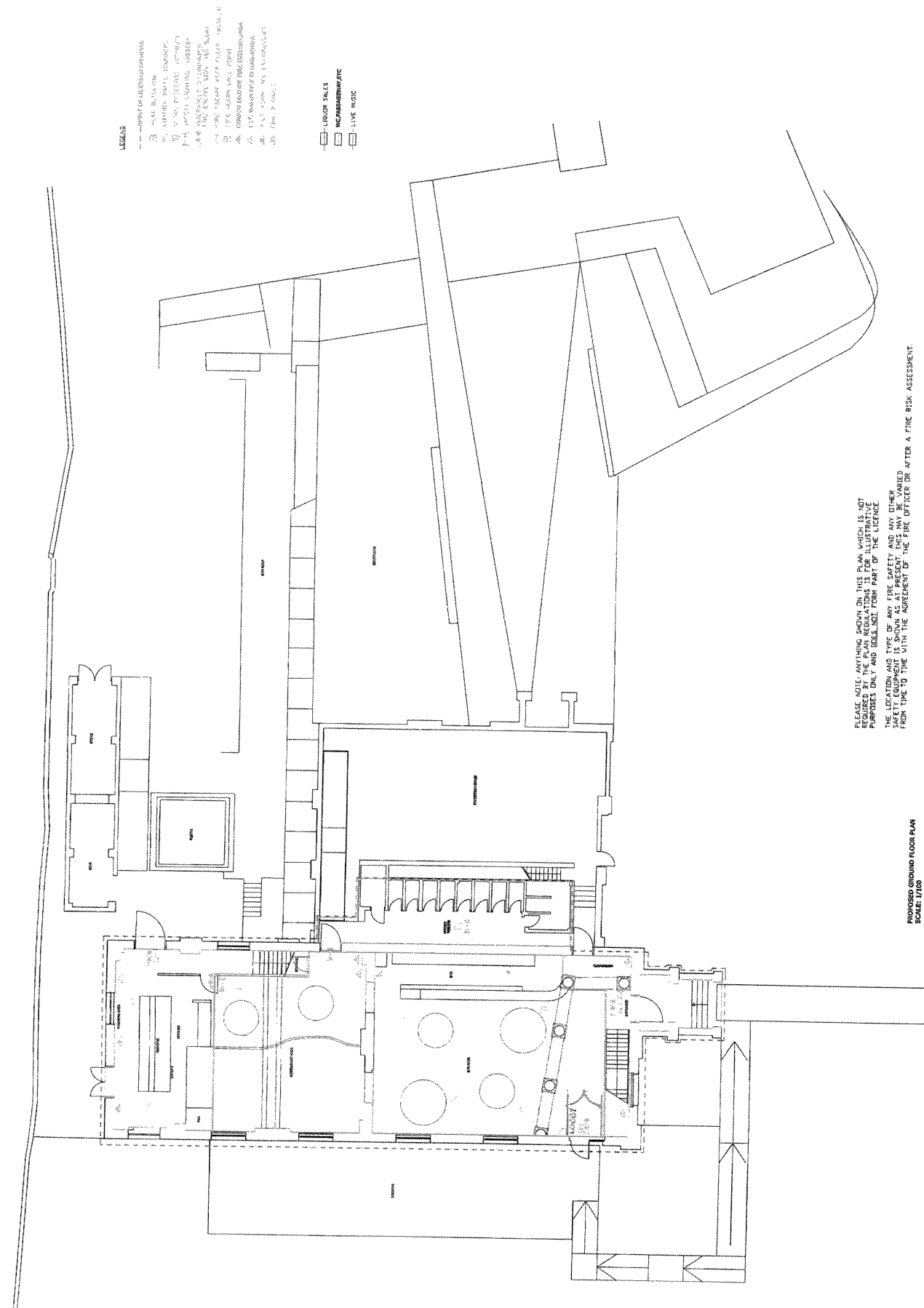
- LEGENDA**
- PERIL ON CAUSEWAY
 - 1-1 FIRE ALARM CALL POINT
 - 1-2 FIRE ALARM CALL POINT
 - 1-3 FIRE ALARM CALL POINT
 - 1-4 FIRE ALARM CALL POINT
 - 1-5 FIRE ALARM CALL POINT
 - 1-6 FIRE ALARM CALL POINT
 - 1-7 FIRE ALARM CALL POINT
 - 1-8 FIRE ALARM CALL POINT
 - 1-9 FIRE ALARM CALL POINT
 - 1-10 FIRE ALARM CALL POINT
 - 1-11 FIRE ALARM CALL POINT
 - 1-12 FIRE ALARM CALL POINT
 - 1-13 FIRE ALARM CALL POINT
 - 1-14 FIRE ALARM CALL POINT
 - 1-15 FIRE ALARM CALL POINT
 - 1-16 FIRE ALARM CALL POINT
 - 1-17 FIRE ALARM CALL POINT
 - 1-18 FIRE ALARM CALL POINT
 - 1-19 FIRE ALARM CALL POINT
 - 1-20 FIRE ALARM CALL POINT
 - 1-21 FIRE ALARM CALL POINT
 - 1-22 FIRE ALARM CALL POINT
 - 1-23 FIRE ALARM CALL POINT
 - 1-24 FIRE ALARM CALL POINT
 - 1-25 FIRE ALARM CALL POINT
 - 1-26 FIRE ALARM CALL POINT
 - 1-27 FIRE ALARM CALL POINT
 - 1-28 FIRE ALARM CALL POINT
 - 1-29 FIRE ALARM CALL POINT
 - 1-30 FIRE ALARM CALL POINT
 - 1-31 FIRE ALARM CALL POINT
 - 1-32 FIRE ALARM CALL POINT
 - 1-33 FIRE ALARM CALL POINT
 - 1-34 FIRE ALARM CALL POINT
 - 1-35 FIRE ALARM CALL POINT
 - 1-36 FIRE ALARM CALL POINT
 - 1-37 FIRE ALARM CALL POINT
 - 1-38 FIRE ALARM CALL POINT
 - 1-39 FIRE ALARM CALL POINT
 - 1-40 FIRE ALARM CALL POINT
 - 1-41 FIRE ALARM CALL POINT
 - 1-42 FIRE ALARM CALL POINT
 - 1-43 FIRE ALARM CALL POINT
 - 1-44 FIRE ALARM CALL POINT
 - 1-45 FIRE ALARM CALL POINT
 - 1-46 FIRE ALARM CALL POINT
 - 1-47 FIRE ALARM CALL POINT
 - 1-48 FIRE ALARM CALL POINT
 - 1-49 FIRE ALARM CALL POINT
 - 1-50 FIRE ALARM CALL POINT
 - 1-51 FIRE ALARM CALL POINT
 - 1-52 FIRE ALARM CALL POINT
 - 1-53 FIRE ALARM CALL POINT
 - 1-54 FIRE ALARM CALL POINT
 - 1-55 FIRE ALARM CALL POINT
 - 1-56 FIRE ALARM CALL POINT
 - 1-57 FIRE ALARM CALL POINT
 - 1-58 FIRE ALARM CALL POINT
 - 1-59 FIRE ALARM CALL POINT
 - 1-60 FIRE ALARM CALL POINT
 - 1-61 FIRE ALARM CALL POINT
 - 1-62 FIRE ALARM CALL POINT
 - 1-63 FIRE ALARM CALL POINT
 - 1-64 FIRE ALARM CALL POINT
 - 1-65 FIRE ALARM CALL POINT
 - 1-66 FIRE ALARM CALL POINT
 - 1-67 FIRE ALARM CALL POINT
 - 1-68 FIRE ALARM CALL POINT
 - 1-69 FIRE ALARM CALL POINT
 - 1-70 FIRE ALARM CALL POINT
 - 1-71 FIRE ALARM CALL POINT
 - 1-72 FIRE ALARM CALL POINT
 - 1-73 FIRE ALARM CALL POINT
 - 1-74 FIRE ALARM CALL POINT
 - 1-75 FIRE ALARM CALL POINT
 - 1-76 FIRE ALARM CALL POINT
 - 1-77 FIRE ALARM CALL POINT
 - 1-78 FIRE ALARM CALL POINT
 - 1-79 FIRE ALARM CALL POINT
 - 1-80 FIRE ALARM CALL POINT
 - 1-81 FIRE ALARM CALL POINT
 - 1-82 FIRE ALARM CALL POINT
 - 1-83 FIRE ALARM CALL POINT
 - 1-84 FIRE ALARM CALL POINT
 - 1-85 FIRE ALARM CALL POINT
 - 1-86 FIRE ALARM CALL POINT
 - 1-87 FIRE ALARM CALL POINT
 - 1-88 FIRE ALARM CALL POINT
 - 1-89 FIRE ALARM CALL POINT
 - 1-90 FIRE ALARM CALL POINT
 - 1-91 FIRE ALARM CALL POINT
 - 1-92 FIRE ALARM CALL POINT
 - 1-93 FIRE ALARM CALL POINT
 - 1-94 FIRE ALARM CALL POINT
 - 1-95 FIRE ALARM CALL POINT
 - 1-96 FIRE ALARM CALL POINT
 - 1-97 FIRE ALARM CALL POINT
 - 1-98 FIRE ALARM CALL POINT
 - 1-99 FIRE ALARM CALL POINT
 - 1-100 FIRE ALARM CALL POINT

- LIQUID PALES
- INCARCERATION/ETC
- LIVE WIRE



PLEASE NOTE ANYTHING SHOWN ON THIS PLAN WHICH IS NOT REQUIRED BY THE PLAN REGULATIONS IS FOR ILLUSTRATIVE PURPOSES ONLY AND DOES NOT FORM PART OF THE LICENSE. THE LOCATION AND TYPE OF ANY FIRE SAFETY AND ANY OTHER SAFETY EQUIPMENT IS SHOWN AS AT PRESENT. THIS MAY BE VARIED FROM TIME TO TIME WITH THE AGREEMENT OF THE FIRE OFFICER OR AFTER A FIRE RISK ASSESSMENT.

PROPOSED FIRST FLOOR PLAN
SCALE: 1/100



LEGEND

- 1. 1.01 1.01 1.01
- 2. 1.02 1.02 1.02
- 3. 1.03 1.03 1.03
- 4. 1.04 1.04 1.04
- 5. 1.05 1.05 1.05
- 6. 1.06 1.06 1.06
- 7. 1.07 1.07 1.07
- 8. 1.08 1.08 1.08
- 9. 1.09 1.09 1.09
- 10. 1.10 1.10 1.10
- 11. 1.11 1.11 1.11
- 12. 1.12 1.12 1.12
- 13. 1.13 1.13 1.13
- 14. 1.14 1.14 1.14
- 15. 1.15 1.15 1.15
- 16. 1.16 1.16 1.16
- 17. 1.17 1.17 1.17
- 18. 1.18 1.18 1.18
- 19. 1.19 1.19 1.19
- 20. 1.20 1.20 1.20
- 21. 1.21 1.21 1.21
- 22. 1.22 1.22 1.22
- 23. 1.23 1.23 1.23
- 24. 1.24 1.24 1.24
- 25. 1.25 1.25 1.25
- 26. 1.26 1.26 1.26
- 27. 1.27 1.27 1.27
- 28. 1.28 1.28 1.28
- 29. 1.29 1.29 1.29
- 30. 1.30 1.30 1.30
- 31. 1.31 1.31 1.31
- 32. 1.32 1.32 1.32
- 33. 1.33 1.33 1.33
- 34. 1.34 1.34 1.34
- 35. 1.35 1.35 1.35
- 36. 1.36 1.36 1.36
- 37. 1.37 1.37 1.37
- 38. 1.38 1.38 1.38
- 39. 1.39 1.39 1.39
- 40. 1.40 1.40 1.40
- 41. 1.41 1.41 1.41
- 42. 1.42 1.42 1.42
- 43. 1.43 1.43 1.43
- 44. 1.44 1.44 1.44
- 45. 1.45 1.45 1.45
- 46. 1.46 1.46 1.46
- 47. 1.47 1.47 1.47
- 48. 1.48 1.48 1.48
- 49. 1.49 1.49 1.49
- 50. 1.50 1.50 1.50
- 51. 1.51 1.51 1.51
- 52. 1.52 1.52 1.52
- 53. 1.53 1.53 1.53
- 54. 1.54 1.54 1.54
- 55. 1.55 1.55 1.55
- 56. 1.56 1.56 1.56
- 57. 1.57 1.57 1.57
- 58. 1.58 1.58 1.58
- 59. 1.59 1.59 1.59
- 60. 1.60 1.60 1.60
- 61. 1.61 1.61 1.61
- 62. 1.62 1.62 1.62
- 63. 1.63 1.63 1.63
- 64. 1.64 1.64 1.64
- 65. 1.65 1.65 1.65
- 66. 1.66 1.66 1.66
- 67. 1.67 1.67 1.67
- 68. 1.68 1.68 1.68
- 69. 1.69 1.69 1.69
- 70. 1.70 1.70 1.70
- 71. 1.71 1.71 1.71
- 72. 1.72 1.72 1.72
- 73. 1.73 1.73 1.73
- 74. 1.74 1.74 1.74
- 75. 1.75 1.75 1.75
- 76. 1.76 1.76 1.76
- 77. 1.77 1.77 1.77
- 78. 1.78 1.78 1.78
- 79. 1.79 1.79 1.79
- 80. 1.80 1.80 1.80
- 81. 1.81 1.81 1.81
- 82. 1.82 1.82 1.82
- 83. 1.83 1.83 1.83
- 84. 1.84 1.84 1.84
- 85. 1.85 1.85 1.85
- 86. 1.86 1.86 1.86
- 87. 1.87 1.87 1.87
- 88. 1.88 1.88 1.88
- 89. 1.89 1.89 1.89
- 90. 1.90 1.90 1.90
- 91. 1.91 1.91 1.91
- 92. 1.92 1.92 1.92
- 93. 1.93 1.93 1.93
- 94. 1.94 1.94 1.94
- 95. 1.95 1.95 1.95
- 96. 1.96 1.96 1.96
- 97. 1.97 1.97 1.97
- 98. 1.98 1.98 1.98
- 99. 1.99 1.99 1.99
- 100. 2.00 2.00 2.00

- LIGION SALES
- WCP/MSR/WHITE
- LIVE MUSIC

PLEASE NOTE ANYTHING SHOWN ON THIS PLAN WHICH IS NOT REQUIRED BY THE BUILDING REGULATIONS IS SHOWN FOR INFORMATION PURPOSES ONLY AND DOES NOT FORM PART OF THE LICENSE. THE LOCATION AND TYPE OF ANY FIRE SAFETY AND FIRE FIGHTING SAFETY EQUIPMENT IS SHOWN AS AT PRESENT. THIS MAY BE CHANGED FROM TIME TO TIME WITH THE AGREEMENT OF THE FIRE OFFICER OR AFTER A FIRE RISK ASSESSMENT.

PROPOSED GROUND FLOOR PLAN
SCALE: 1/100